



The Monster Employment Index Netherlands Reports Slight Decline in Online Job Opportunities Due To Falls in Construction & Extraction and HR

February 2009 Index Highlights:

- The Monster Employment Index Netherlands showed a two point dip in online job demand in February, marking a tenth consecutive month of decline, yet showing a lesser reduction than in January. Year-on-year the Index showed a sharp reduction in online job availability, declining 80 points, or 40 percent
- The construction and extraction; and the HR sector showed the steepest monthly falls. The HR sector also noted the steepest annual decline
- In contrast, online job availability raised the most in the healthcare, social work; and banking, finance and insurance sectors.
- Only the legal sector showed year-on-year growth
- Regionally, opportunities dipped the most in Noord-Holland and Overijssel. Year-on-year all the tracked regions saw lower demand, with Noord-Holland showing the sharpest decrease

Summary Overview

The Monster Employment Index Netherlands declined just two points in February, yet registered the sharpest annual decline on record at 40 percent. Despite the fall some areas such as the healthcare and social work; and banking, finance and insurance sectors showed some signs of increase. The downturn in job availability is in line with the Dutch Government Office which has forecasted an economic contraction of three and a half percent in 2009, with unemployment rising to almost nine percent.

The Monster Employment Index Europe is a monthly analysis of millions of online job opportunities culled from a large, representative selection of corporate career sites and job boards across Netherlands, including Monsterboard.nl.

Feb 09	Jan 09	Dec 08	Nov 08	Oct 08	Sep 08	Aug 08	Jul 08	Jun 08	May 08	Apr 08	Mar 08	Feb 08
121	123	147	156	164	170	173	194	203	206	210	210	201

“The two-point fall in February showed a moderation in the Index’s decline after the sharp 24-point drop in January. The findings are in-line with the Dutch Bureau for Economic Policy Analysis, which predicts a further fall in job demand and the possibility of national unemployment climbing to almost nine percent,” commented Diana Krieger, general manager Benelux, Monster Worldwide Europe. “Despite the overall decline, the Index has shown some bright spots such as the healthcare and social work; and banking, finance and insurance sectors which have bucked the declining trend.”

Construction and extraction; and HR sectors continue decline

Construction and extraction workers noted a second month of lower offerings, dropping 15 points, in February. Sector demand dropped most for craft and related workers, as has been the case for the three months prior. Despite the overall sector decline, moderate increases were seen among plant and machine operators and assemblers. Year-on-year the sector showed a fall of 33 percent.

The HR sector registered the fifth consecutive month of decline in February. The fall was driven by reduced online opportunities for professionals. Despite the industry decrease there was solid growth registered in the Noord-Brabant region. Year-on-year the sector noted the sharpest contraction of 65 percent.

The healthcare and social work sector bucked this month’s trends, rebounding 17 points after a month of decline. The growth was driven by increased offerings for professionals. The Limburg region registered the highest rate of increase. Year-on-year the sector was down eight points.

The banking, finance and insurance sector showed a 16 point increase in February after three months of decline. Major increases were noted for professionals in the sector. Year-on-year the category noted a sharp decline of 53 points or 42 percent.

Plant and machine operators and assemblers register steepest decline in February

Online job availability for plant and machine operators and assemblers declined ten points in February. Offerings tapered in the production, manufacturing, maintenance and repair sectors for the eighth consecutive month. Year-on-year demand in the sector plummeted 65 points, or 41 percent.

Skilled agricultural and fishery workers bucked the seven month declining trend and edged up ten points in February. The growth was driven by higher demand in agriculture, fishing and forestry. Major increases were seen in Noord-brabant, Friesland, Flevoland and Noord-Holland. Year-on-year the category fell 24 points, or 12 percent.

Noord-Holland registers fifth month of decline, whilst Zeeland notes higher worker demand

Noord-Holland fell seven points in February, the fifth consecutive month of decline. Within the region, opportunities slid most for the construction and extraction sector. Gains within the region were noted in agriculture, fishing and forestry; banking, finance

and insurance; healthcare and social work; and sales sectors. Year-on-year the region noted the sharpest decline of 96 points, or 51 percent.

Overijssel dropped for the fifth consecutive month in the Index in February. The four point drop was due to major declines in the construction and extraction; HR; and marketing, PR and media sectors. In contrast, the engineering sector showed some recovery following two months of downturn. The region declined 78 points, or 37 percent year-on-year.

The Zeeland region rose 11 points in February to reverse direction from its recent two month downtrend. The rise was due to increased opportunities in the banking, finance and insurance; construction and extraction; and administrative and organization sectors. Year-on-year the region dipped five points or three percent.

Top Growth Sectors Year-on-Year

Industries showing the highest increase in demand on an annual basis:

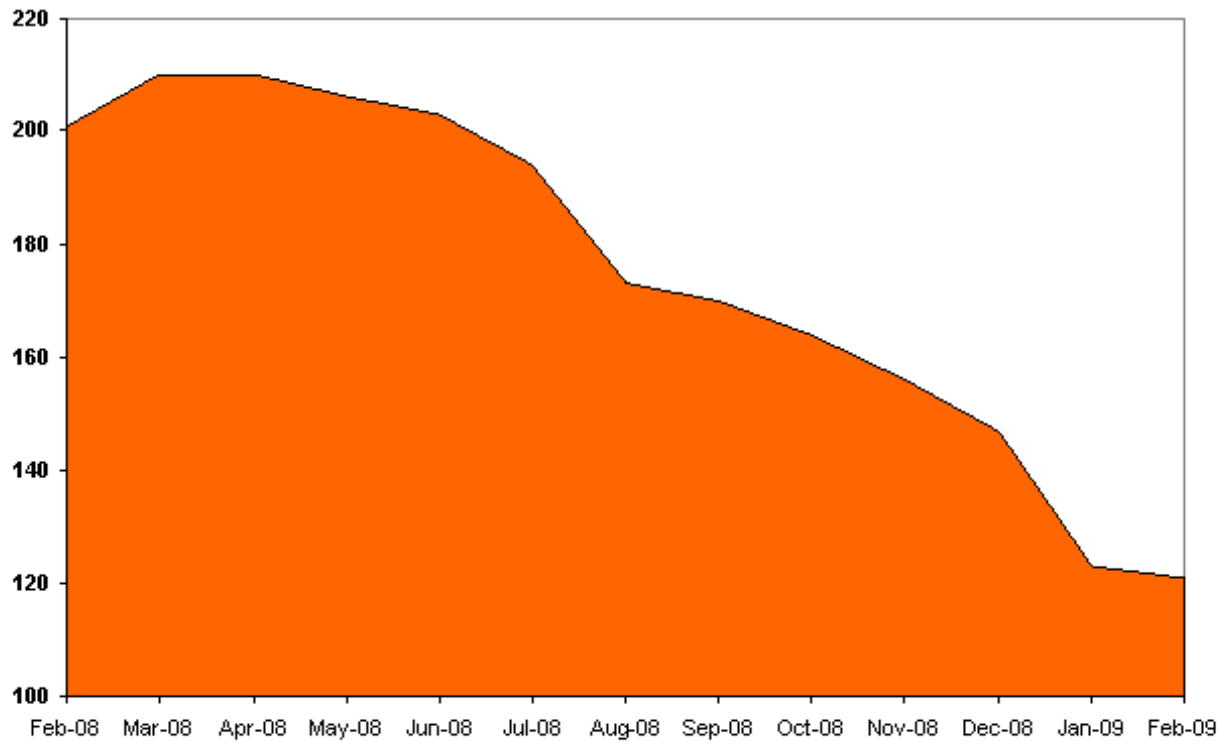
Industry	Feb 09	Jan 09	Feb 08
Healthcare, social work	256	239	264
Banking, finance, insurance	74	58	127
Legal	184	169	172
Public sector, defence, community	178	169	216
Research and development	72	63	187

Top Occupational Groups Year-on-Year

Occupational groups showing the highest increase in demand on an annual basis:

Occupations	Feb 09	Jan 09	Feb 08
Skilled agricultural and fishery workers	178	168	202
Craft and related workers	227	223	269
Clerical support workers	171	168	303
Service and sales workers	111	108	233

Monster Employment Index Netherlands



Monster Employment Index Netherlands findings across industry sectors for the past 13 months are as follows:

Industry	Feb 09	Jan 09	Dec 08	Nov 08	Oct 08	Sep 08	Aug 08	Jul 08	Jun 08	May 08	Apr 08	Mar 08	Feb 08
Accounting, audit, taxes	117	130	140	140	144	154	155	164	169	169	179	180	173
Administrative, organisation	132	126	169	188	192	218	230	280	299	314	292	293	273
Agriculture, fishing and forestry	127	119	121	123	129	132	133	137	141	141	144	135	136
Banking, finance, insurance	74	58	72	77	98	94	100	129	125	120	120	125	127
Construction and extraction	85	100	120	119	119	111	105	112	119	117	125	126	126
Education, training and library	172	173	193	196	215	223	210	242	248	257	250	257	236
Engineering	108	107	123	129	129	132	136	146	152	162	165	169	158
Healthcare, social work	256	239	252	244	238	260	249	271	293	300	278	274	264
Hospitality and tourism	156	166	180	203	235	251	265	265	283	302	292	261	250
HR	78	93	110	137	157	182	179	192	214	215	231	240	223
IT	111	113	129	135	136	138	139	144	152	151	149	145	151
Legal	184	169	183	196	210	202	206	207	216	198	191	191	172
Management and consulting	119	130	151	162	165	167	169	190	197	191	197	204	193
Marketing, PR and media	65	75	94	102	105	117	121	130	155	152	163	178	164
Production, manufacturing, maintenance, repair	197	194	216	221	231	228	231	245	243	244	251	247	243
Public sector, defence, community	178	169	204	213	224	219	208	230	248	228	227	231	216
Research and development	72	63	80	102	107	121	116	136	186	173	167	173	187
Sales	124	124	145	154	163	172	178	203	209	212	220	223	211
Telecommunications	39	50	74	90	96	88	93	105	101	96	100	107	93
Transport, post and logistics	171	177	221	251	276	290	303	335	342	340	330	321	303

Monster Employment Index Netherlands findings across occupational categories for the past 13 months are as follows:

Occupation Group	Feb 09	Jan 09	Dec 08	Nov 08	Oct 08	Sep 08	Aug 08	Jul 08	Jun 08	May 08	Apr 08	Mar 08	Feb 08
Managers	115	119	149	163	169	173	172	199	219	200	204	213	203
Professionals	123	123	140	147	152	157	159	173	184	186	190	192	184
Technicians and associate professionals	92	98	116	124	129	139	142	156	160	163	168	173	164
Clerical support workers	171	168	201	221	234	256	265	324	338	349	337	330	303
Service and sales workers	111	108	121	142	168	185	198	228	250	260	265	244	233
Skilled agricultural and fishery workers	178	168	172	178	184	192	194	203	214	213	220	199	202
Craft and related workers	227	223	249	250	260	245	247	263	253	258	275	266	269
Plant and machine operators and assemblers	92	102	112	128	128	139	139	160	174	172	168	174	157
Elementary occupations	212	212	274	295	325	329	331	336	312	314	289	270	289

Monster Employment Index Netherlands findings across Dutch regions for the past 13 months are as follows:

Region	Feb 09	Jan 09	Dec 08	Nov 08	Oct 08	Sep 08	Aug 08	Jul 08	Jun 08	May 08	Apr 08	Mar 08	Feb 08
Drenthe	139	139	166	177	185	190	189	213	232	227	214	217	208
Flevoland	140	139	156	160	176	183	196	230	233	232	224	223	209
Friesland	127	123	149	156	169	179	179	198	215	218	218	213	201
Gelderland	127	127	153	166	174	177	185	210	227	240	245	232	223
Groningen	143	143	176	184	195	197	201	210	221	226	219	220	205
Limburg	116	118	137	150	170	176	186	191	208	216	235	239	230
Noord-Brabant	125	124	155	167	175	181	187	205	221	225	229	227	215
Noord-Holland	91	98	123	134	141	152	151	175	190	185	188	193	187
Overijssel	134	138	170	179	185	190	190	217	238	247	235	226	212
Utrecht	132	134	154	162	167	170	170	192	177	187	193	195	187
Zeeland	147	136	157	160	142	147	147	157	148	155	157	161	152
Zuid-Holland	113	115	140	148	154	160	162	178	190	187	193	197	188

Monster Employment Index Netherlands for March will be released on April 14, 2009.

About The Monster Employment Index Europe

The Monster Employment Index Europe provides monthly insight into online recruitment trends across the European Union. Launched in June 2005 with data from December 2004, the Index is based on a review of millions of employer job opportunities culled from a large, representative selection of corporate career sites and job boards, including Monster. The Monster Employment Index's underlying data is validated for accuracy by Research America, Inc. – an independent, third-party auditing firm – to ensure that measured online job recruitment activity is within a margin of error of +/- 1.05%.

The Index monitors online job opportunities across all European Union member countries.

The monthly reports for Belgium, France, Germany, Italy, the Netherlands, Sweden, the United Kingdom and Europe are available at:

http://corporate.monster.com/Press_Room/MEI_EU.asp.

About Monster Worldwide

Monster Worldwide, Inc. (NYSE: MWW), parent company of Monster, the premier global online employment solution for more than a decade, strives to inspire people to improve their lives. With a local presence in key markets in North America, Europe, and Asia, Monster works for everyone by connecting employers with quality job seekers at all levels and by providing personalized career advice to consumers globally. Through online media sites and services, Monster delivers vast, highly targeted audiences to advertisers. Monster Worldwide is a member of the S&P 500 index. To learn more about Monster's industry-leading products and services, visit www.monster.com. More information about Monster Worldwide is available at <http://corporate.monster.com>.

Special Note: Safe Harbor Statement Under the Private Securities Litigation Reform Act of 1995: Except for historical information contained herein, the statements made in this release constitute forward-looking statements within the meaning of Section 27A of the Securities Act of 1933 and Section 21E of the Securities Exchange Act of 1934. Such forward-looking statements involve certain risks and uncertainties, including statements regarding Monster Worldwide, Inc.'s strategic direction, prospects and future results. Certain factors, including factors outside of Monster Worldwide's control, may cause actual results to differ materially from those contained in the forward-looking statements, including economic and other conditions in the markets in which Monster Worldwide operates, risks associated with acquisitions, competition, seasonality and the other risks discussed in Monster Worldwide's Form 10-K/A and other filings made with the Securities and Exchange Commission, which discussions are incorporated in this release by reference.

CONTACTS:

Annemarije Pikaar
Monster Worldwide Netherlands
+31 (0)20 7528562
annemarije.pikaar@monsterboard.nl