



Monster Employment Index Belgium Increases for the Second Straight Month, Despite Overall European Economic Downturn

March 2009 Index Highlights:

- The Monster Employment Index Belgium rose eight points, or eight percent, in March as online job availability increased for a second consecutive month
- Year-on-year, the Index was down 24 points, or 18 percent
- From a sector point of view, the healthcare; production; and public sectors saw the largest monthly increases
- Year-on-year, there was growth in opportunities in healthcare, social work, the public sector; and construction. By contrast, there were downturns in hiring in engineering; accounting; and marketing
- Demand rose among all occupational groups. Opportunities for managers; and technicians and associate professionals showed significant increase
- Online opportunities increased markedly in the Flemish region. Gains were also made in Brussels-Capital, although the region recorded the steepest annual drop in hiring
- By contrast, the Monster Employment Index Europe fell by three points, or three percent, in March. The majority of the markets saw decreased opportunities, with only Belgium, Italy and France registering an increase in hiring

Summary Overview

The Monster Employment Index Belgium increased for the second month in a row, registering an eight point, eight percent upturn. Year-on-year, the overall Belgian online job market contracted by 24 points, or 18 percent – significantly less than the 58 point, 34 percent decline experienced throughout Europe.

The Monster Employment Index Europe is a monthly analysis of millions of online job opportunities culled from a large, representative selection of corporate career sites and job boards across Europe, including Monster.be.

Mar 09	Feb 09	Jan 09	Dec 08	Nov 08	Oct 08	Sep 08	Aug 08	Jul 08	Jun 08	May 08	Apr 08	Mar 08
110	102	99	102	107	114	116	118	123	127	127	129	134

“The Monster Employment Index shows a monthly growth in Belgium in March, especially in healthcare, engineering, production and the public sector,” commented Bernard Hensmans, country manager for Monster. “Although this is the second consecutive monthly increase in online job availability, the Index is down 18 percent from a year ago.”

Further growth in hiring in the healthcare and social work sector

Demand in the healthcare, social work sector rose for the second successive month, increasing by 22 Index points, or 17 percent, in the March Index. Regionally, offerings grew most in Brussels-Capital and the Walloon regions. Year-on-year, the industry edged up 20 points, or 15 percent.

Job opportunities for production, manufacturing, maintenance workers also increased in March for the third straight month. More opportunities for craft and related workers and elementary occupations were reported in the Flemish region. Brussels-Capital also saw a rise in craft and related opportunities. Year-on-year, demand was down by 12 points, or nine percent.

Hiring in the sales sector increased by 10 points or nine percent in March, registering a fourth straight month-over-month increase. Demand grew in all regions, with the Walloon Region showing the largest gain. Despite this growth, the sales sector is down 26 points, or 17 percent, year-on-year.

By contrast, online job availability in the accounting, audit, and taxes sector fell by one Index point, or one percent, following moderate growth in February. Online hiring in Brussels-Capital registered a dip. Year-on-year, the sector is down 48 points, or 26 percent.

Demand continues to climb for managers; and technicians and associate professionals

Online demand for managers grew by 16 Index points, or 14 percent, in March – the third consecutive monthly increase. This growth was driven by an influx of management offerings created by overall growth in the marketing, PR and media sector. Regionally, demand for managers increased most in the Flemish Region. Year-on-year, demand for managers was up three points, or two percent.

Offerings for technicians and associate professionals rose by 12 Index points, or 12 percent, following an increase in February. Advertised online demand for these workers rose most notably in the Walloon Region. Year-on-year, demand for technicians and associate professionals was down by 28 points, or 20 percent.

Job opportunities rise in the Flemish Region

The Flemish Region showed the strongest regional increase in March, growing by 18 Index points, or 19 percent. This growth was primarily due to increase in demand in the hospitality and tourism; and sales sectors. Year-on-year, the region was down 28 points, or 20 percent.

Brussels-Capital experienced an increase in demand of four percent in March, building on gains made in February. This rise in demand was led by an upturn in job availability in the sales sector. Despite this recent growth, hiring in the region is down by 38 percent on an annual basis.

Top Industries Looking for Employees

Industry sectors showing the greatest rate of increase in online job availability month-to-month included:

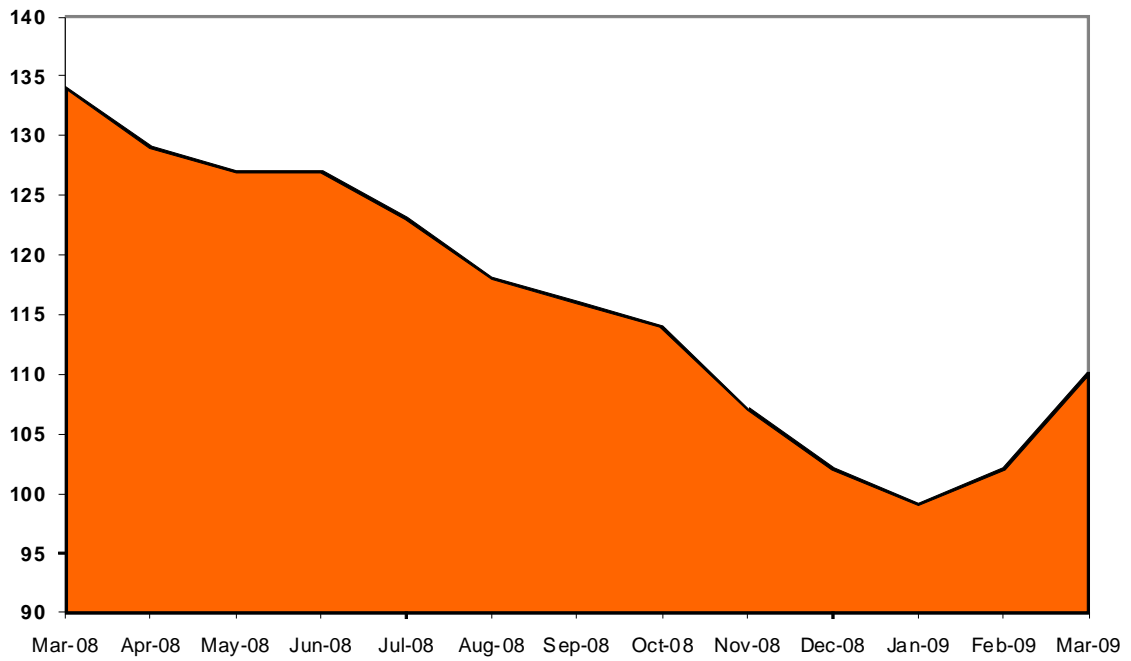
Industry	Mar 09	Feb 09	Mar 08
Production, manufacturing, maintenance, repair	124	104	136
Engineering	130	110	145
Healthcare, Social Work, Personal Care	155	133	135
Construction and Extraction	125	111	115
Education, Training, and Library	166	150	171

Most Wanted Occupational Experience

Occupational groups showing the greatest rate of increase in online job availability month-to-month included:

Occupation	Mar 09	Feb 09	Mar 08
Service and sales workers	94	81	126
Managers	131	115	128
Craft and related trades workers	119	105	112
Technicians and associate professionals	111	99	139

Monster Employment Index Belgium



Monster Employment Index Belgium findings across industry sectors for the past 13 months are as follows:

Industry	Mar 09	Feb 09	Jan 09	Dec 08	Nov 08	Oct 08	Sep 08	Aug 08	Jul 08	Jun 08	May 08	Apr 08	Mar 08
Accounting, audit, taxes	134	135	130	142	148	150	144	152	164	178	176	175	182
Administrative, organization	91	85	87	86	89	101	105	106	118	119	119	123	129
Agriculture, fishing and forestry	151	147	141	141	142	146	148	147	147	149	141	138	133
Arts, entertainment, sports, leisure	96	89	80	81	90	118	134	145	161	159	152	156	152
Banking, finance, insurance	96	87	94	90	94	102	107	108	114	114	123	123	131
Construction and extraction	125	111	104	106	109	115	116	111	117	115	114	115	115
Education, training and library	166	150	154	155	153	150	164	169	161	165	169	165	171
Engineering	130	110	102	111	115	127	119	121	135	137	131	140	145
Environment, architecture, urbanism	108	106	96	98	105	107	106	105	113	111	113	123	119
Healthcare, social work	155	133	121	121	114	112	118	125	129	131	131	133	135
Hospitality and tourism	83	77	72	71	77	92	113	108	108	121	119	120	120
HR	88	89	97	102	113	122	123	132	132	143	152	143	154
IT	108	105	105	110	112	113	113	114	115	117	118	119	121
Legal	107	108	109	114	111	119	122	121	128	133	129	125	147
Management and consulting	122	112	102	104	108	109	110	111	115	116	118	119	123
Marketing, PR and media	90	90	85	96	100	113	116	114	133	135	128	134	143
Production, manufacturing, maintenance, repair	124	104	95	95	106	113	112	113	118	121	120	125	136
Public sector, defence, community	190	175	166	173	175	182	178	173	182	181	155	171	163
Research and development	117	115	114	115	120	120	120	121	125	124	126	130	133
Sales	125	115	105	109	112	119	123	125	133	142	141	144	151
Transport, post and logistics	53	51	55	62	77	107	120	119	129	128	129	136	144

Monster Employment Index Belgium findings across occupational categories for the past 13 months are as follows:

Occupation	Mar 09	Feb 09	Jan 09	Dec 08	Nov 08	Oct 08	Sep 08	Aug 08	Jul 08	Jun 08	May 08	Apr 08	Mar 08
Managers	131	115	109	110	112	115	114	115	120	122	123	125	128
Professionals	111	108	107	111	115	117	118	120	124	127	128	130	135
Technicians and associate professionals	111	99	93	98	103	112	116	118	127	129	128	133	139
Clerical support workers	95	90	92	90	94	106	110	111	123	124	125	128	134
Service and sales workers	94	81	73	75	75	94	111	111	110	124	126	126	126
Skilled agricultural and fishery workers	151	147	141	141	142	146	148	147	147	149	141	138	133
Craft and related workers	119	105	88	89	94	98	96	95	100	103	102	105	112
Plant and machine operators and assemblers	120	119	118	123	131	145	147	145	151	154	151	156	159
Elementary occupations	105	97	98	97	106	116	120	119	119	119	119	120	124

Monster Employment Index Belgium findings across regions for the past 13 months are as follows:

Region	Mar 09	Feb 09	Jan 09	Dec 08	Nov 08	Oct 08	Sep 08	Aug 08	Jul 08	Jun 08	May 08	Apr 08	Mar 08
Brussels-Capital	87	84	73	85	89	104	116	120	130	128	128	133	141
Flemish Region	114	96	92	94	98	108	112	113	122	129	129	133	142
Walloon Region	110	110	108	111	116	119	116	118	122	124	125	127	130

Monster Employment Index Belgium for April will be released on May 12, 2009.

About The Monster Employment Index Europe

The Monster Employment Index Europe provides monthly insight into online recruitment trends across the European Union. Launched in June 2005 with data from December 2004, the Index is based on a review of millions of employer job opportunities culled from a large, representative selection of corporate career sites and job boards, including Monster. The Monster Employment Index's underlying data is validated for accuracy by Research America, Inc. – an independent, third-party auditing firm – to ensure that measured online job recruitment activity is within a margin of error of +/- 1.05%.

The Index monitors online job opportunities across all European Union member countries.

The monthly reports for Belgium, France, Germany, Italy, the Netherlands, Sweden, the United Kingdom and Europe are available at:

http://corporate.monster.com/Press_Room/MEI_EU.asp.

About Monster Worldwide

Monster Worldwide, Inc. (NYSE: MWW), parent company of Monster, the premier global online employment solution for more than a decade, strives to inspire people to improve their lives. With a local presence in key markets in North America, Europe, and Asia, Monster works for everyone by connecting employers with quality job seekers at all levels and by providing personalized career advice to consumers globally. Through online media sites and services, Monster delivers vast, highly targeted audiences to advertisers. Monster Worldwide is a member of the S&P 500 index. To learn more about Monster's industry-leading products and services, visit www.monster.com. More information about Monster Worldwide is available at <http://corporate.monster.com>.

Special Note: Safe Harbor Statement Under the Private Securities Litigation Reform Act of 1995: Except for historical information contained herein, the statements made in this release constitute forward-looking statements within the meaning of Section 27A of the Securities Act of 1933 and Section 21E of the Securities Exchange Act of 1934. Such forward-looking statements involve certain risks and uncertainties, including statements regarding Monster Worldwide, Inc.'s strategic direction, prospects and future results. Certain factors, including factors outside of Monster Worldwide's control, may cause actual results to differ materially from those contained in the forward- looking statements, including economic and other conditions in the markets in which Monster Worldwide operates, risks associated with acquisitions, competition, seasonality and the other risks discussed in Monster Worldwide's Form 10-K/A and other filings made with the Securities and Exchange Commission, which discussions are incorporated in this release by reference.

CONTACTS:

Ann Van Den Begin
Monster Worldwide Belgium
+32 2 753 11 40
Ann.vandenBegin@monster.be