

## Online Recruitment Activity Declines by Less in Belgium than in Other EU Countries in January, According to the Monster Employment Index Europe

### January 2009 Index Highlights:

- The Monster Employment Index Belgium dropped three points or three percent and reached an Index low in January, the seventh straight month of decline
- Year-on-year, the Index was down 19 points, or 16 percent, reflecting the eleventh month of negative annual growth, showing a sharp contraction in the online job market
- The accounting, audit and taxes; and marketing, PR and media sectors experienced the sharpest monthly contractions while transport, post and logistics dipped the most year-on-year
- In contrast, slightly increased job availability was seen in the banking, finance and insurance; and administrative, organisation sectors
- All regions continued to decline, with Brussels-Capital showing the greatest monthly and annual retraction
- The Monster Employment Index Europe reported a sharp decline in January, losing 26 points, or 19% as a result of strong falls in the UK, France and Germany. Year-on-year, the European Index was down 33 points, or 24 percent

### Summary Overview

The Monster Employment Index Belgium fell in January for a seventh consecutive month of decline, reaching its lowest point on record. The monthly decline mirrors that of Europe as a whole, yet the drop was not as severe as other countries throughout the EU as the UK, France and Germany all showed sharp falls.

The Monster Employment Index Europe is a monthly analysis of millions of online job opportunities culled from a large, representative selection of corporate career sites and job boards across Europe, including Monster.be.

Jan 09	Dec 08	Nov 08	Oct 08	Sep 08	Aug 08	Jul 08	Jun 08	May 08	Apr 08	Mar 08	Feb 08	Jan 08
99	102	107	114	116	118	123	127	127	129	134	133	118

“According to the most recent economic forecast by the European Commission, the Belgian economy is set to shrink by 1.9 percent this year. Until organisations can gain a clearer picture of the prospects for recovery, they are likely to remain cautious about hiring new recruits,” commented Bernard Hensmans, country manager, Belgium. “Despite the overall downturn, the recent findings from the National Bank of Belgium that stated that employer and consumer confidence increased slightly in January is positive news.”

**Accounting, audit and taxes and the marketing, PR and media sectors continue to decline**

Accounting, audit, and taxes registered the third consecutive month of decline, as the sector dropped 12 points, or eight percent. The sector is now 52 points below its peak in February 2008. Year-on-year the decline was 21 points or 14 percent.

Marketing, PR and media continued its downward trend which started in October 2008, sliding 11 points, or 11 percent in the Index. The sector’s decline has been mainly due to sluggish demand for technicians and associate professionals. Year-on-year decline was 31 points, or 27 percent.

Banking, finance and insurance; and administrative and organisation bucked the overall downward trend in January increasing by four percent and one percent, respectively. The banking, finance and insurance sector remained unchanged compared to a year ago, however administrative and organisation dropped 19 percent year-on-year.

**Technicians and associate professionals continue declining**

Among occupational groups, technicians and associate professionals extended the decline in online job availability to the seventh month in January. Online offerings dipped the most in HR; marketing, PR and media; and research and development.

Plant and machine operators, and assemblers also continued the downtrend in January. The four percent decline was mainly due to the downturn in opportunities in the transport, post and logistics sector which has been driving the decline in this sector for the past four months. Year-on-year the group showed a 24 point, or 17 percent decline.

Clerical support workers rebounded two percent in January, following eight months of declining opportunities. Despite this monthly growth the sector was still down 19 points, or 17 percent compared to the start of 2008.

**All regions continue to decline at the beginning of 2009**

Brussels-Capital continued to see reduced offerings in January. The 12-point, or 14 percent decrease is the sixth consecutive month of decline. Major falls were seen in the HR; IT; and management and consulting sectors. However, job availability in the banking, finance and insurance sector showed notable gains. Year-on-year, demand was down 32 points, or 30%, the steepest decrease among all regions.

The Walloon-Region fell three percent in January, continuing to the third consecutive month of decline. The Flemish region also retracted two points or two percent. Year-

on-year the regions fell by eight points, or seven percent, and twenty seven points, or 23 percent respectively.

**Top Industries Looking for Employees**

Industry sectors showing the greatest rate of increase in online job availability month-to-month included:

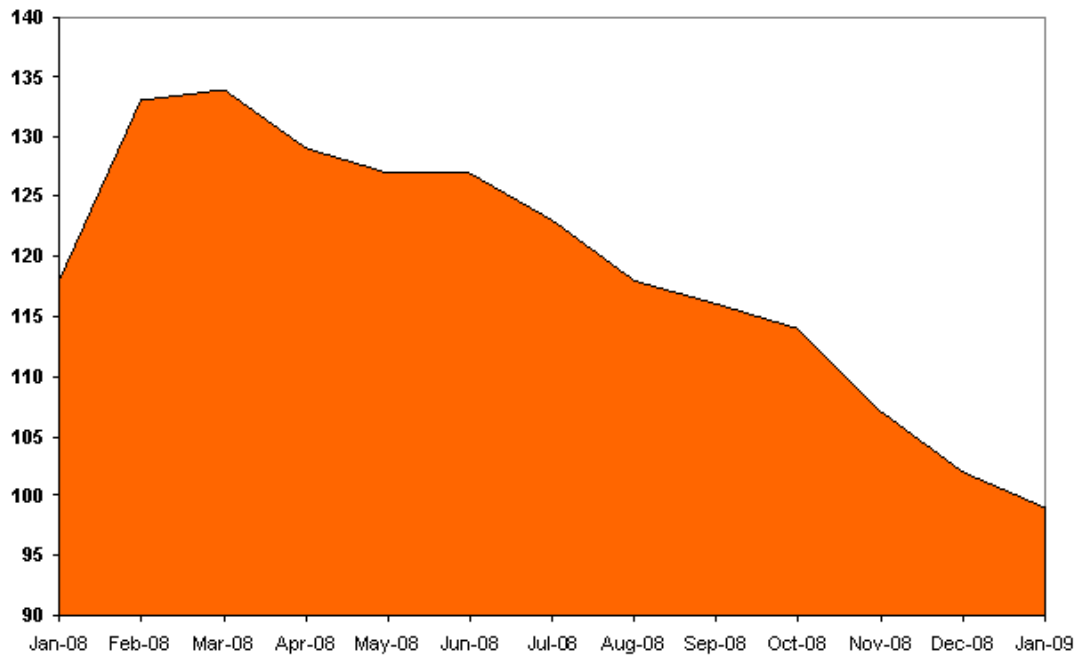
<b>Industry</b>	<b>Jan 09</b>	<b>Dec 08</b>	<b>Jan 08</b>
Banking, finance, insurance	94	90	94
Administrative, organisation	87	86	107
Hospitality and tourism	72	71	118
Healthcare, social work	121	121	131

**Most Wanted Occupational Experience**

Occupational groups showing the greatest rate of increase in online job availability month-to-month included:

<b>Industry</b>	<b>Jan 09</b>	<b>Dec 08</b>	<b>Jan 08</b>
Clerical support workers	92	90	111
Elementary occupations	98	97	117
Skilled agricultural and fishery workers	141	141	129

### Monster Employment Index Belgium



Monster Employment Index Belgium findings across industry sectors for the past 13 months are as follows:

Industry	Jan 09	Dec 08	Nov 08	Oct 08	Sep 08	Aug 08	Jul 08	Jun 08	May 08	Apr 08	Mar 08	Feb 08	Jan 08
Accounting, audit, taxes	130	142	148	150	144	152	164	178	176	175	182	182	151
Administrative, organisation	87	86	89	101	105	106	118	119	119	123	129	123	107
Agriculture, fishing and forestry	141	141	142	146	148	147	147	149	141	138	133	132	129
Arts, entertainment, sports, leisure	80	81	90	118	134	145	161	159	152	156	152	154	137
Banking, finance, insurance	94	90	94	102	107	108	114	114	123	123	131	127	94
Construction and extraction	104	106	109	115	116	111	117	115	114	115	115	115	109
Education, training and library	154	155	153	150	164	169	161	165	169	165	171	159	155
Engineering	102	111	115	127	119	121	135	137	131	140	145	145	123
Environment, architecture, urbanism	96	98	105	107	106	105	113	111	113	123	119	117	110
Healthcare, social work	121	121	114	112	118	125	129	131	131	133	135	144	131
Hospitality and tourism	72	71	77	92	113	108	108	121	119	120	120	122	118
HR	97	102	113	122	123	132	132	143	152	143	154	151	133
IT	105	110	112	113	113	114	115	117	118	119	121	120	112
Legal	109	114	111	119	122	121	128	133	129	125	147	155	127
Management and consulting	102	104	108	109	110	111	115	116	118	119	123	124	115
Marketing, PR and media	85	96	100	113	116	114	133	135	128	134	143	146	116
Production, manufacturing, maintenance, repair	95	95	106	113	112	113	118	121	120	125	136	138	117
Public sector, defence, community	166	173	175	182	178	173	182	181	155	171	163	171	143
Research and development	114	115	120	120	120	121	125	124	126	130	133	131	119
Sales	105	109	112	119	123	125	133	142	141	144	151	150	131
Transport, post and logistics	55	62	77	107	120	119	129	128	129	136	144	142	121

Monster Employment Index Belgium findings across occupational categories for the past 13 months are as follows:

Occupation	Jan 09	Dec 08	Nov 08	Oct 08	Sep 08	Aug 08	Jul 08	Jun 08	May 08	Apr 08	Mar 08	Feb 08	Jan 08
Managers	109	110	112	115	114	115	120	122	123	125	128	130	121
Professionals	107	111	115	117	118	120	124	127	128	130	135	133	118
Technicians and associate professionals	93	98	103	112	116	118	127	129	128	133	139	139	119
Clerical support workers	92	90	94	106	110	111	123	124	125	128	134	129	111
Service and sales workers	73	75	75	94	111	111	110	124	126	126	126	130	116
Skilled agricultural and fishery workers	141	141	142	146	148	147	147	149	141	138	133	133	129
Craft and related workers	88	89	94	98	96	95	100	103	102	105	112	110	101
Plant and machine operators and assemblers	118	123	131	145	147	145	151	154	151	156	159	159	142
Elementary occupations	98	97	106	116	120	119	119	119	119	120	124	123	117

Monster Employment Index Belgium findings across regions for the past 13 months are as follows:

Region	Jan 09	Dec 08	Nov 08	Oct 08	Sep 08	Aug 08	Jul 08	Jun 08	May 08	Apr 08	Mar 08	Feb 08	Jan 08
Brussels-Capital	73	85	89	104	116	120	130	128	128	133	141	144	105
Flemish Region	92	94	98	108	112	113	122	129	129	133	142	139	119
Walloon Region	108	111	116	119	116	118	122	124	125	127	130	128	116

Monster Employment Index Belgium for February will be released on March 10, 2009.

**About The Monster Employment Index Europe**

The Monster Employment Index Europe provides monthly insight into online recruitment trends across the European Union. Launched in June 2005 with data from December 2004, the Index is based on a review of millions of employer job opportunities culled from a large, representative selection of corporate career sites and job boards, including Monster. The Monster Employment Index's underlying data is validated for accuracy by Research America, Inc. – an independent, third-party auditing firm – to ensure that measured online job recruitment activity is within a margin of error of +/- 1.05%.

The Index monitors online job opportunities across all European Union member countries.

The monthly reports for Belgium, France, Germany, Italy, the Netherlands, Sweden, the United Kingdom and Europe are available at:

[http://corporate.monster.com/Press\\_Room/MEI\\_EU.asp](http://corporate.monster.com/Press_Room/MEI_EU.asp).

**About Monster Worldwide**

Monster Worldwide, Inc. (NYSE: MWW), parent company of Monster, the premier global online employment solution for more than a decade, strives to inspire people to improve their lives. With a local presence in key markets in North America, Europe, and Asia, Monster works for everyone by connecting employers with quality job seekers at all levels and by providing personalized career advice to consumers globally. Through online media sites and services, Monster delivers vast, highly targeted audiences to advertisers. Monster Worldwide is a member of the S&P 500 index.. To learn more about Monster's industry-leading products and services, visit [www.monster.com](http://www.monster.com). More information about Monster Worldwide is available at <http://corporate.monster.com>.

**Special Note:** Safe Harbor Statement Under the Private Securities Litigation Reform Act of 1995: Except for historical information contained herein, the statements made in this release constitute forward-looking statements within the meaning of Section 27A of the Securities Act of 1933 and Section 21E of the Securities Exchange Act of 1934. Such forward-looking statements involve certain risks and uncertainties, including statements regarding Monster Worldwide, Inc.'s strategic direction, prospects and future results. Certain factors, including factors outside of Monster Worldwide's control, may cause actual results to differ materially from those contained in the forward- looking statements, including economic and other conditions in the markets in which Monster Worldwide operates, risks associated with acquisitions, competition, seasonality and the other risks discussed in Monster Worldwide's Form 10-K/A and other filings made with the Securities and Exchange Commission, which discussions are incorporated in this release by reference.

**CONTACTS:**

Ann Van Den Begin  
Monster Worldwide Belgium  
+32 2 753 11 40  
[Ann.vandenBegin@monster.be](mailto:Ann.vandenBegin@monster.be)